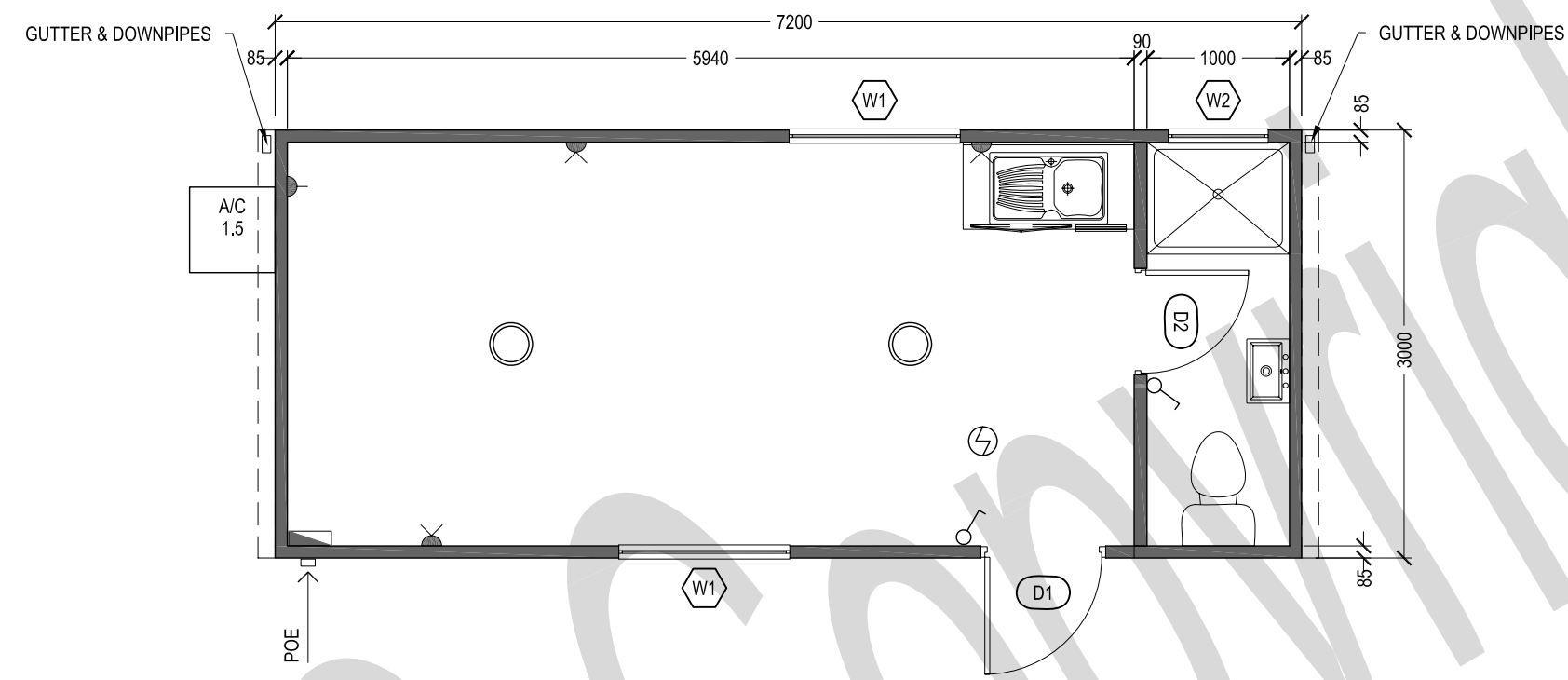


LEGEND

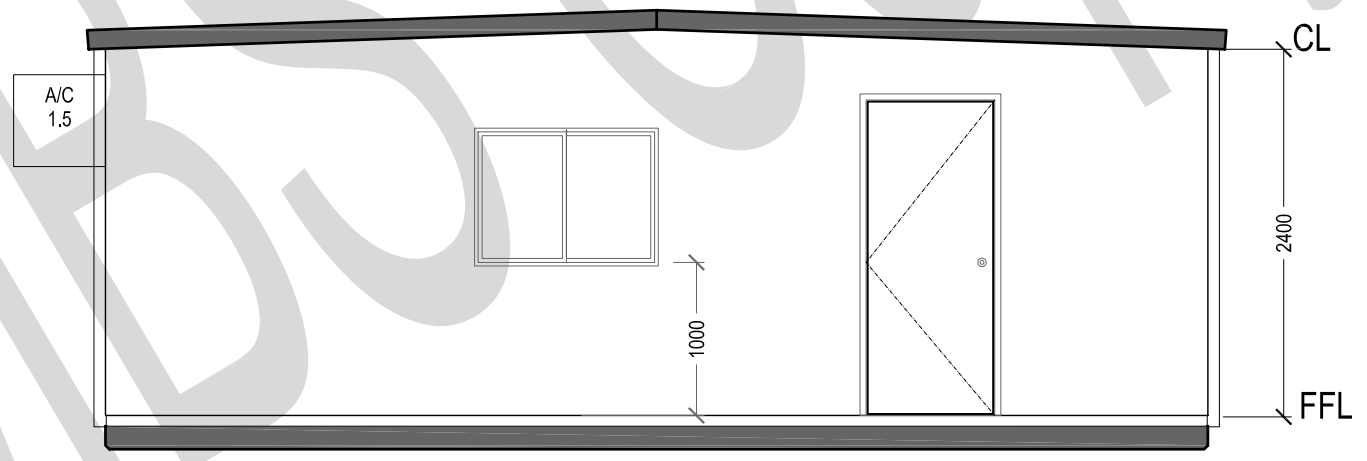
MK	ITEM DESCRIPTION	QTY
D1	820 EXTERNAL DOOR	1
D2	720 INTERNAL TIMBER DOOR	1
W1	900h x 1200w ALUMINIUM WINDOW POWDER COATED FRAME WITH SLIDING SASH	2
W2	350h x 700w ALUMINIUM WINDOW POWDER COATED FRAME WITH SLIDING SASH	1
○	OYSTER LIGHTS	2
⊗	LIGHT SWITCH	2
▭	CIRCUIT BREAKER BOARD (POA)	1
⚡	SMOKE DETECTOR	1
🚰	SINGLE SINK WITH CUPBOARD	1
🚰	STAINLESS STEEL HAND BASIN F / W HOT / COLD FLICK MIXER TAPS	1

GPO AND POWER

MK	ITEM DESCRIPTION	QTY
⬇	SINGLE GPO - 10AMP - 1550 AFL	1
⬇	DOUBLE GPO - 10AMP - 300 AFL	3



FLOOR PLAN



ELEVATION



146 GILBA ROAD
GIRRAWEEEN
2145
TEL: 9636 4445
FAX: 9636 4454

CLIENT APPROVAL

SIGNATURE: _____
NAME: _____
DATE: _____

No.	DESCRIPTION	DATE
A	TEMPLATE	01.09.2008

CLIENT:
MODULAR BUILDING SYSTEMS

© COPYRIGHT. THE INFORMATION IDEAS AND CONCEPTS CONTAINED IN THIS DOCUMENT ARE CONFIDENTIAL. THE RECIPIENT(S) OF THIS DOCUMENT IS/ARE PROHIBITED FROM DISCLOSING SUCH INFORMATION, IDEAS AND CONCEPTS TO ANY PERSON WITHOUT THE PRIOR WRITTEN CONSENT OF MODULAR BUILDING SYSTEMS Pty, Ltd

h:\design\mbs building catalogue\accommodation units\mp-bt-ac-7230-01.dwg

TITLE: 7.2 x 3.0 ACCOMMODATION BUILDING G.A.	
QUOTATION NUMBER:	DRAWING NUMBER: MP-BT-AC-7230-01
DATE: 20.08.08	SHEET: 1 OF 1 REV: A
DRAWN BY: B.G	SCALE: SHEET A3
CHECKED BY: ARTH	